



BEFORE YOU BEGIN:

PLEASE READ THROUGH THE INSTRUCTIONS AND INSPECT THE KIT BEFORE YOU GET STARTED.

Tools: You may need basic hobby tools such as a hobby knife, files, and sandpaper as well as glue to complete the assembly process.

Glue: We recommend using both superglue and PVA (white glue). Super glue is necessary for gluing any plastic, acrylic, or resin parts and sets very quickly. PVA gives you more working time if you need it for larger areas or for parts that need extra finesse to get lined up perfectly.

Cleaning Parts: The sprue points where parts were attached to the sheets can be sanded flush or carefully saved with a hobby knife. We do not recommend scaping as you would with plastic or resin models as it tends to make the MDF fray and get fuzzy. Part cleaning with a hobby knife is easiest if done before assembly, but can frequently be done after if you have files and sandpaper on hand. Where possible, we try to place sprue points in our designs to be in hidden places to avoid the need for cleaning on many parts.

Priming: We highly recommend priming with a FLAT enamel spray paint. Rustoleum and Krylon make these types of paint and are what we use in the studio.

Painting: Paint with your normal hobby and spray paints to finish your project.

Thank you so much for your purchase and please reach out if you have any questions or run into any issues.

Email us at: support@deathraydesigns.com
Chat us on Facebook: [FB.com/DeathRayDesigns](https://www.facebook.com/DeathRayDesigns)

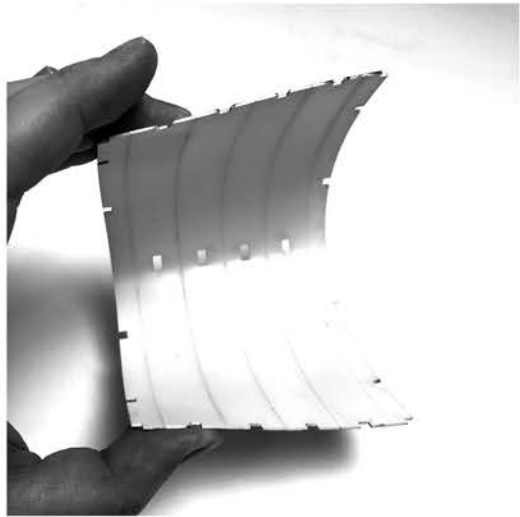


1



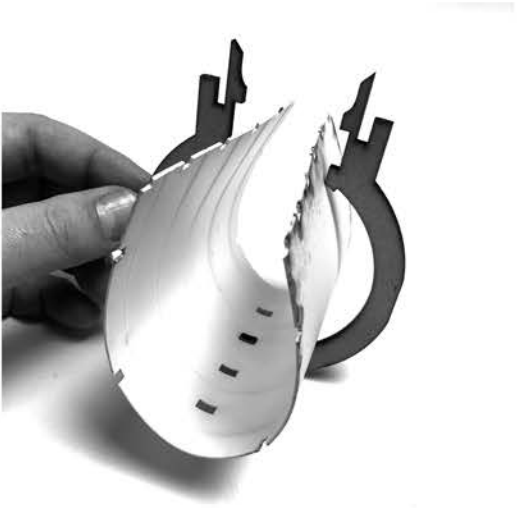
Gather these parts

2



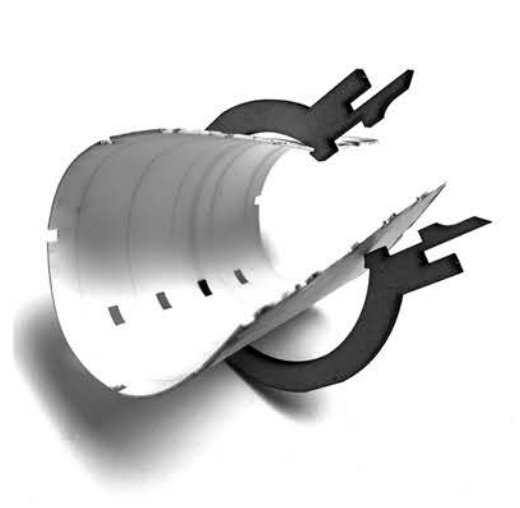
Gently bend the plastic plate so that the details are on the inside

3



Slide it into one of the horseshoes and fit the peg in the middle of the horseshoe in one of the holes near the middle in the plastic

4



Press the plastic from inside until it pops under the hook near the edge.

5



Repeat the process for the other side making sure the hooks are lining up with the notches in the edge of the plastic.

6



Repeat the process for the other horseshoes



7



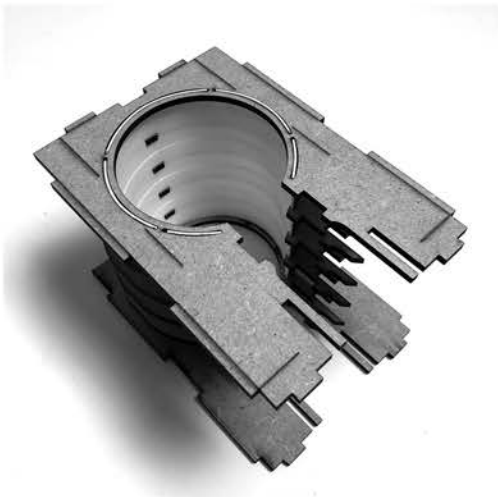
Gather these parts

8



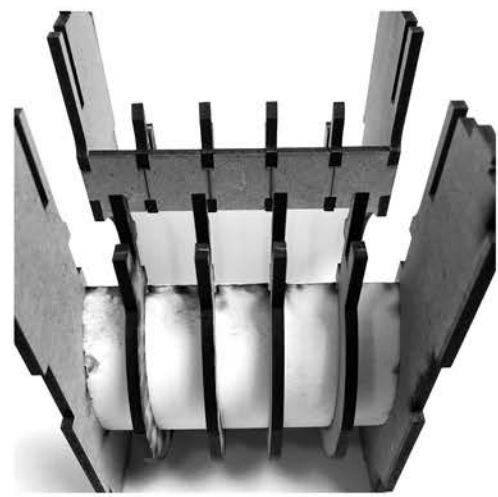
Insert tabs on the curved edge of the plastic into the slots on the panel as shown

9



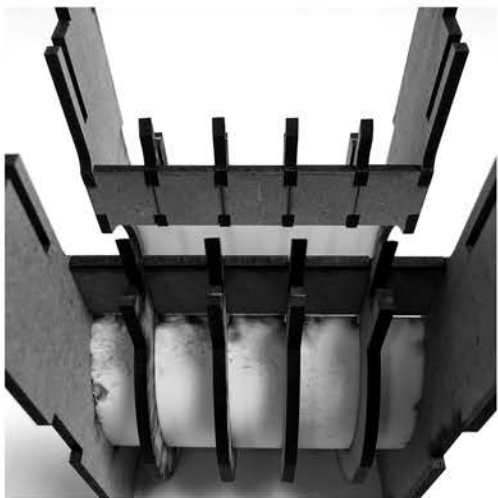
Repeat for the other side of the other plastic and the second copy of that plate

10



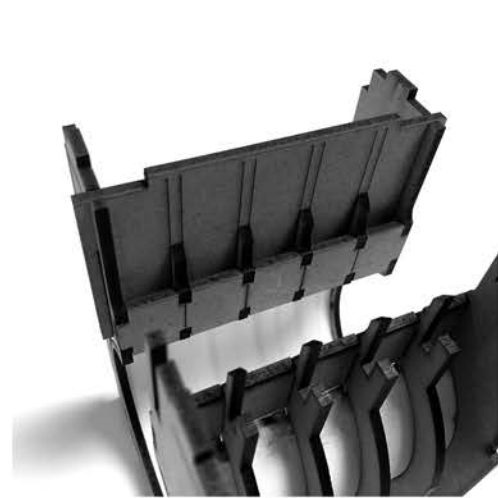
Slot one of the wide strips into the area at the top of the horseshoes as shown with the details facing in

11



Repeat for the other strip on the other side

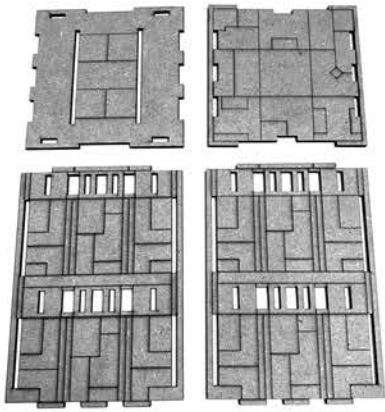
12



Slide the large rectangular panels in from the top and locking into the tops of each horseshoe with the details facing in

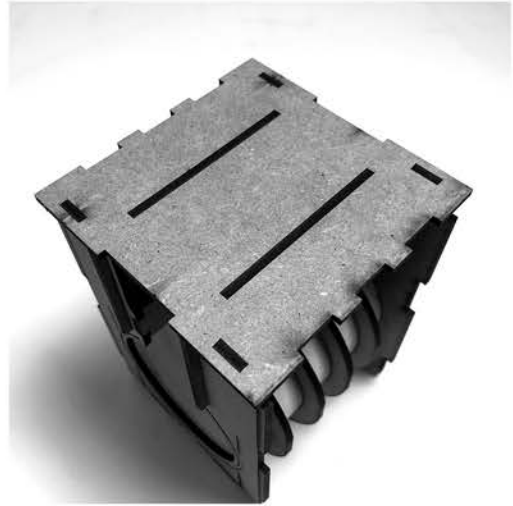


13



Gather these parts

14



Glue on the bottom plate on as shown

15



Glue on the top plate on as shown

16



Glue both sides on

17



Apply the decorative horseshoes over the slots for the curved plastic as shown

18



You're all Done