



## **BEFORE YOU BEGIN:**

**PLEASE READ THROUGH THE INSTRUCTIONS AND INSPECT THE KIT BEFORE YOU GET STARTED.**

**Tools:** You may need basic hobby tools such as a hobby knife, files, and sandpaper as well as glue to complete the assembly process.

**Glue:** We recommend using both superglue and PVA (white glue). Super glue is necessary for gluing any plastic, acrylic, or resin parts and sets very quickly. PVA gives you more working time if you need it for larger areas or for parts that need extra finesse to get lined up perfectly.

**Cleaning Parts:** The sprue points where parts were attached to the sheets can be sanded flush or carefully saved with a hobby knife. We do not recommend scaping as you would with plastic or resin models as it tends to make the MDF fray and get fuzzy. Part cleaning with a hobby knife is easiest if done before assembly, but can frequently be done after if you have files and sandpaper on hand. Where possible, we try to place sprue points in our designs to be in hidden places to avoid the need for cleaning on many parts.

**Priming:** We highly recommend priming with a FLAT enamel spray paint. Rustoleum and Krylon make these types of paint and are what we use in the studio.

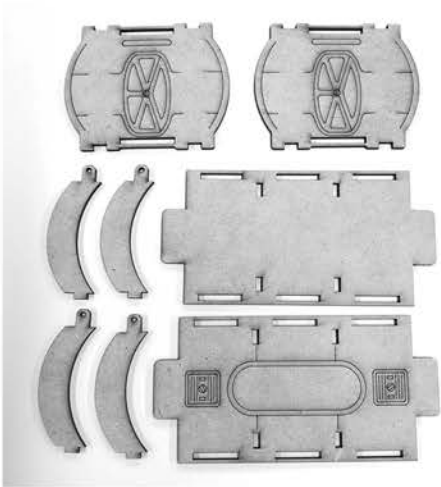
**Painting:** Paint with your normal hobby and spray paints to finish your project.

Thank you so much for your purchase and please reach out if you have any questions or run into any issues.

Email us at: [support@deathraydesigns.com](mailto:support@deathraydesigns.com)  
Chat us on Facebook: [FB.com/DeathRayDesigns](https://www.facebook.com/DeathRayDesigns)

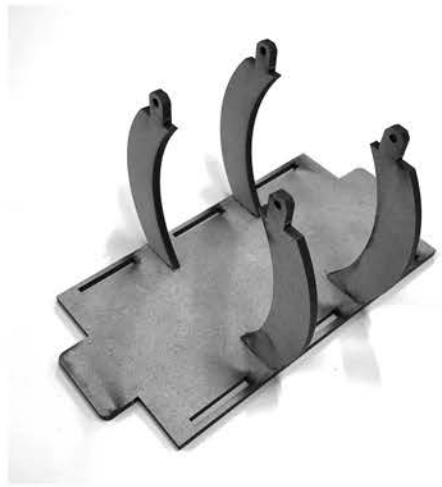


**1**



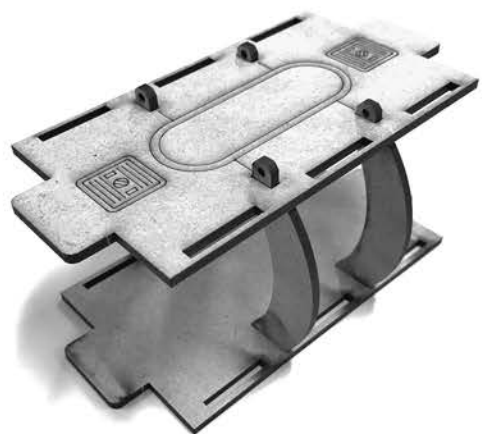
Gather these parts.

**2**



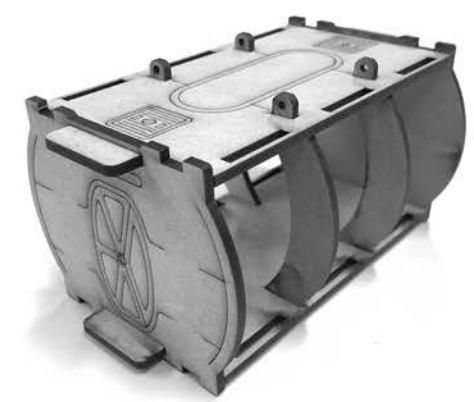
Glue the shot pegs of the ribs into the base plate (the one without etched details).

**3**



Glue the top plate on as shown. Detail side up with the long tabs protruding out of the top.

**4**



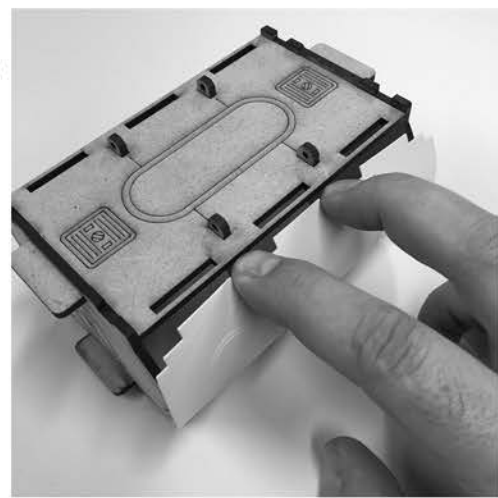
Glue both face plates on as shown.

**5**



Take one of the flexible white plastic card pieces and line it up with the three slots in the base plate.

**6**



Flex the plate and get the top tabs lined up with three slots in the top plate.





7



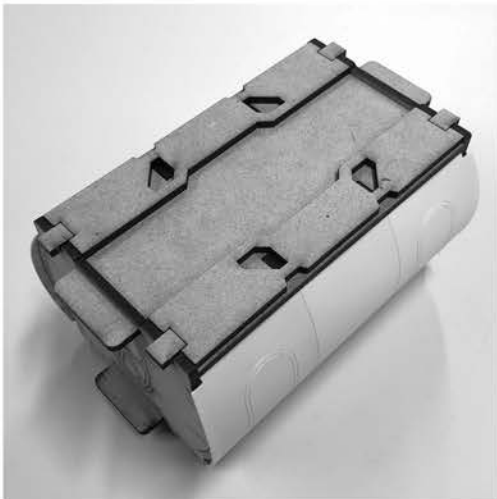
Once it is locked in it should look like this..

8



Gather these detail parts.

9



Flip to the bottom and glue on the two bottom detail plates as shown.

10



Flip to the top and glue on the two top detail plates as shown.

11



Glue the ladders and keypad panels.

12



We recommend gluing the Keypad and ladder on the opposite side for each end to help with lining up for stacking with the double pods.

