



### **BEFORE YOU BEGIN:**

**PLEASE READ THROUGH THE INSTRUCTIONS AND INSPECT THE KIT BEFORE YOU GET STARTED.**

**Tools:** You may need basic hobby tools such as a hobby knife, files, and sandpaper as well as glue to complete the assembly process.

**Glue:** We recommend using both superglue and PVA (white glue). Super glue is necessary for gluing any plastic, acrylic, or resin parts and sets very quickly. PVA gives you more working time if you need it for larger areas or for parts that need extra finesse to get lined up perfectly.

**Cleaning Parts:** The sprue points where parts were attached to the sheets can be sanded flush or carefully saved with a hobby knife. We do not recommend scaping as you would with plastic or resin models as it tends to make the MDF fray and get fuzzy. Part cleaning with a hobby knife is easiest if done before assembly, but can frequently be done after if you have files and sandpaper on hand. Where possible, we try to place sprue points in our designs to be in hidden places to avoid the need for cleaning on many parts.

**Priming:** We highly recommend priming with a FLAT enamel spray paint. Rustoleum and Krylon make these types of paint and are what we use in the studio.

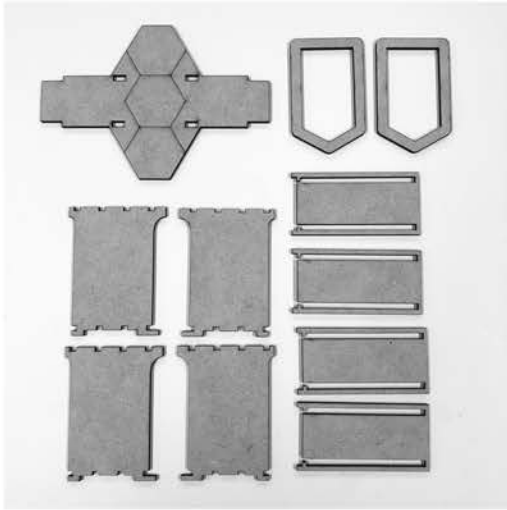
**Painting:** Paint with your normal hobby and spray paints to finish your project.

Thank you so much for your purchase and please reach out if you have any questions or run into any issues.

Email us at: [support@deathraydesigns.com](mailto:support@deathraydesigns.com)  
Chat us on Facebook: [FB.com/DeathRayDesigns](https://www.facebook.com/DeathRayDesigns)



1



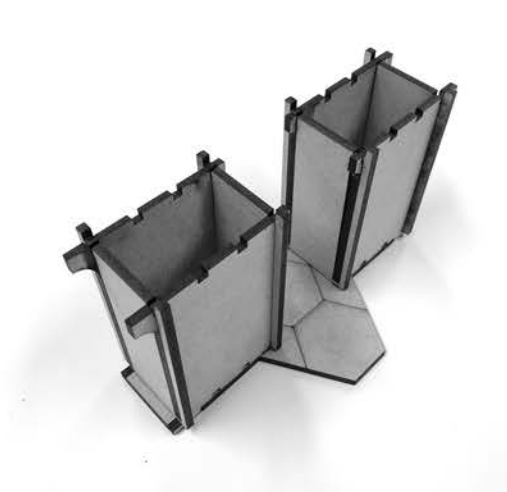
Gather these wall parts.

2



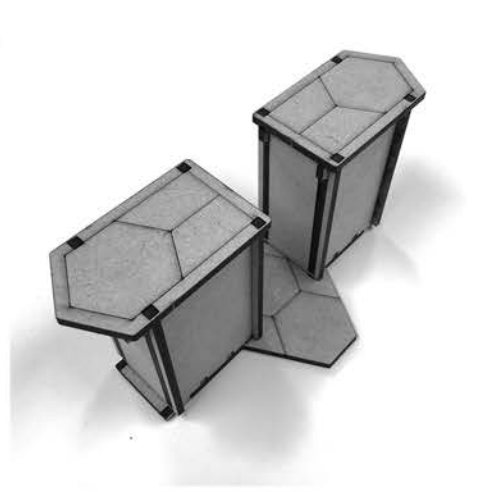
Glue together two boxes like this.

3



Glue each to the hex base plate shown in in step 1.

4



Glue on the Pentagonal roof plates.

5



Glue on the roof rims. Try to keep them centered up as much as possible.

6



Find 8 of these slat details.

7



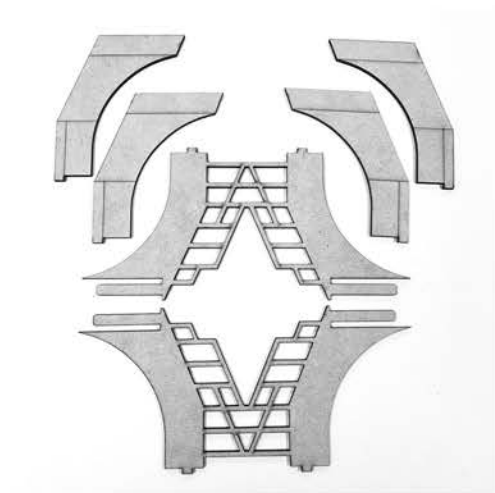
Glue them in the sides of this building as shown

8



AFTER PAINTING: Glue the windows on the vertical faces as shown.

9



Gather these parts.

10



Glue the arc shapes onto the sides of each of the large frame plates shown. Make sure the bottom and top outside corners match up.

11



Gather the product of the previous step and the other parts shown here.

12



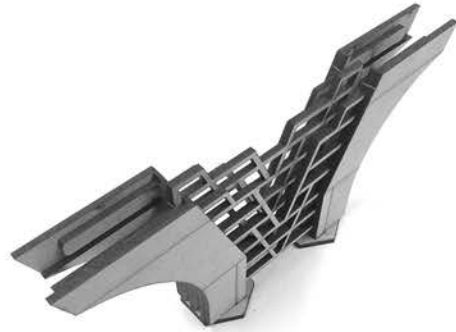
Lay out the two hex feet and glue in one of the sides from step 10 into them as shown.

13



Glue in the central frame plate in the center of each hex foot.

14



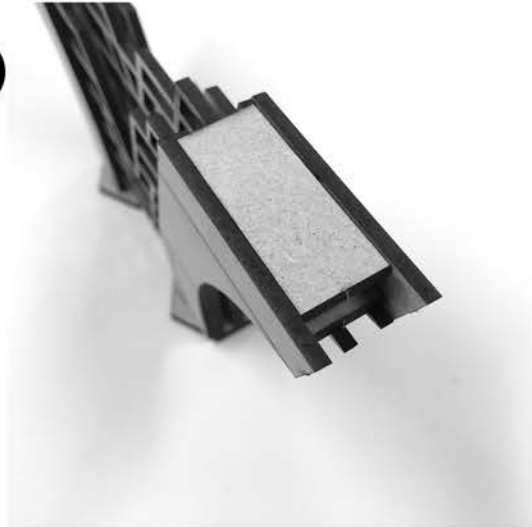
Glue on the other outer plate from step 10.

15



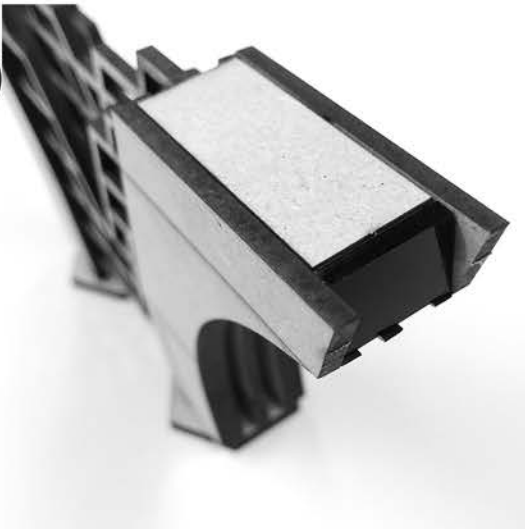
Glue in one rectangular plate in the slots created by the outer plate as shown on both sides.

16



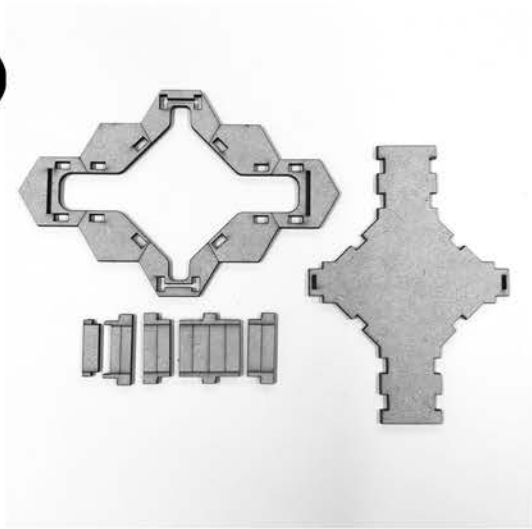
Glue in the other plates on top as shown.

17



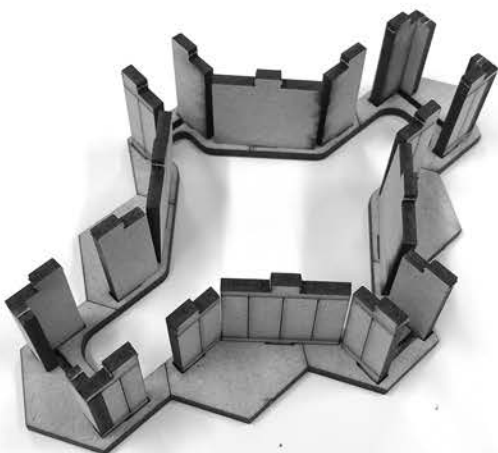
**AFTER PAINTING:** Glue the small windows on the end of the construct as shown.

18



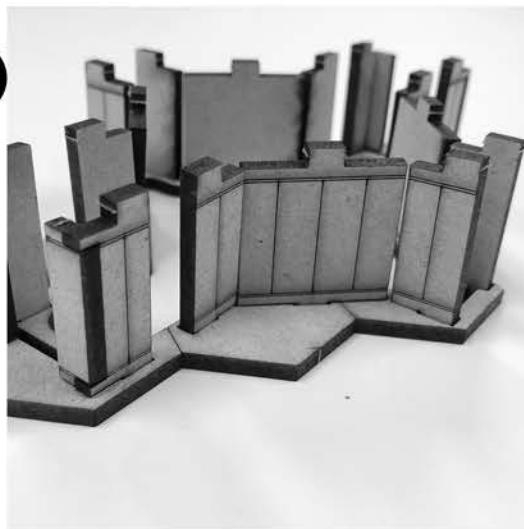
Gather all parts that look like these.

19



Glue the slats in as shown.

20



Here is another angle that should help show where each slat type goes.

21



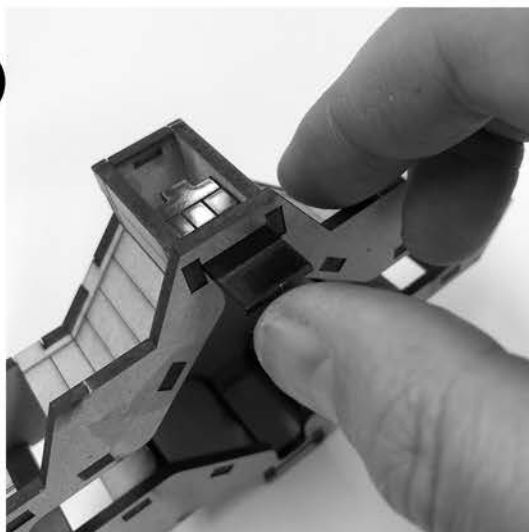
Glue the top plate on all these slats as shown. It may take a minute so be careful and work from one end to the other getting the pegs seated.

22



AFTER PAINTING: Slot the doors in from the bottom as shown.

23



AFTER PAINTING: Slot the windows with the tab at the top in and lot into the slot in the top plate.

24



AFTER PAINTING: Glue the remaining small windows in from the inside of the building in the gap near the door ends

25



Glue the Two-Tower section on top of the base section.

26



OPTIONAL: Glue the large arc section in the center or keep it separate for a large sculptural piece.