

**LAST DAYS**

**GUN SHOP**



### **BEFORE YOU BEGIN:**

**PLEASE READ THROUGH THE INSTRUCTIONS AND INSPECT THE KIT BEFORE YOU GET STARTED.**

**Tools:** You may need basic hobby tools such as a hobby knife, files, and sandpaper as well as glue to complete the assembly process.

**Glue:** We recommend using both superglue and PVA (white glue). Super glue is necessary for gluing any plastic, acrylic, or resin parts and sets very quickly. PVA gives you more working time if you need it for larger areas or for parts that need extra finesse to get lined up perfectly.

**Cleaning Parts:** The sprue points where parts were attached to the sheets can be sanded flush or carefully saved with a hobby knife. We do not recommend scaping as you would with plastic or resin models as it tends to make the MDF fray and get fuzzy. Part cleaning with a hobby knife is easiest if done before assembly, but can frequently be done after if you have files and sandpaper on hand. Where possible, we try to place sprue points in our designs to be in hidden places to avoid the need for cleaning on many parts.

**Priming:** We highly recommend priming with a FLAT enamel spray paint. Rustoleum and Krylon make these types of paint and are what we use in the studio.

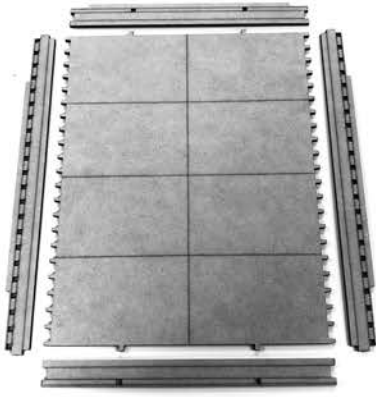
**Painting:** Paint with your normal hobby and spray paints to finish your project.

Thank you so much for your purchase and please reach out if you have any questions or run into any issues.

Email us at: [support@deathraydesigns.com](mailto:support@deathraydesigns.com)  
Chat us on Facebook: [FB.com/DeathRayDesigns](https://www.facebook.com/DeathRayDesigns)



1



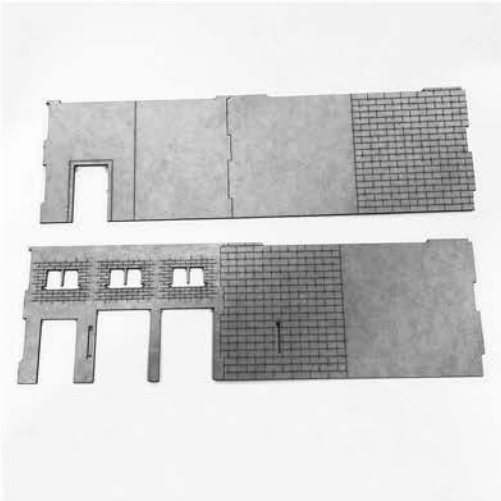
Gather these parts for the roof.

2



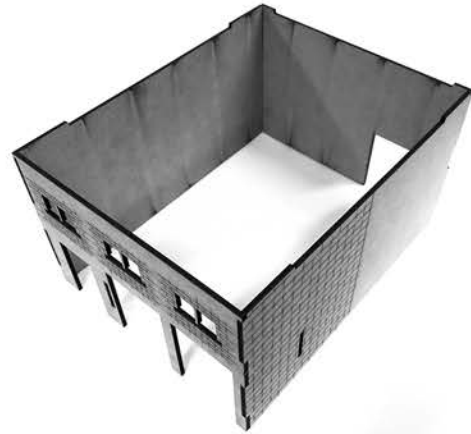
Glue on sides as shown.

3



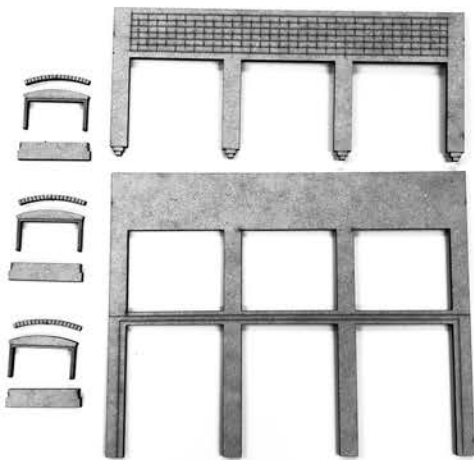
Gather these walls.

4



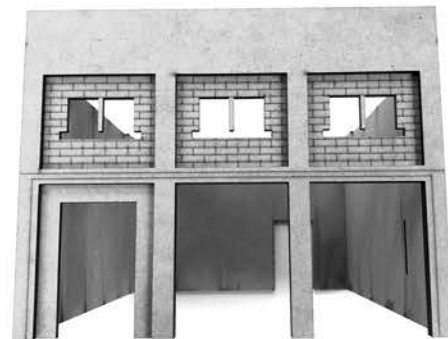
Glue walls together as shown.

5



Gather these parts for the front.

6

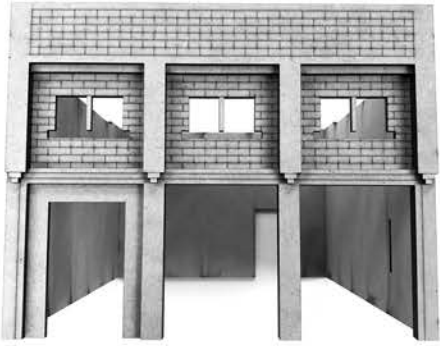


Glue on the larger frame first as shown.



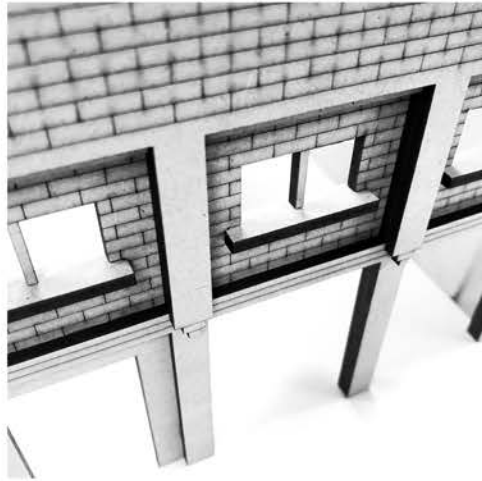


7



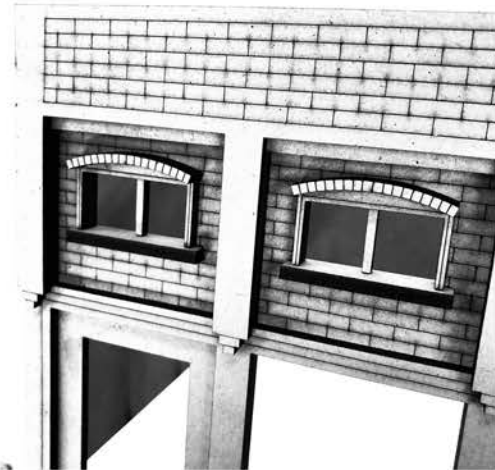
Glue on the small upper frame making sure the top edge is lined up with the previous parts.

8



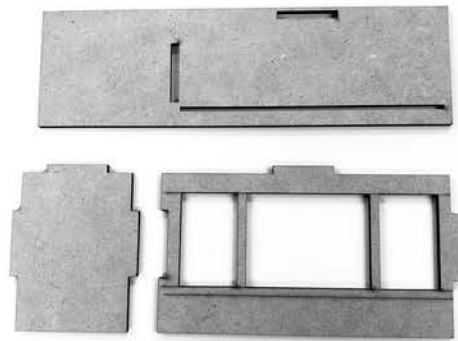
Glue in windowsills.

9



Glue on window frames.

10



Gather these internal walls and loft plate.

11



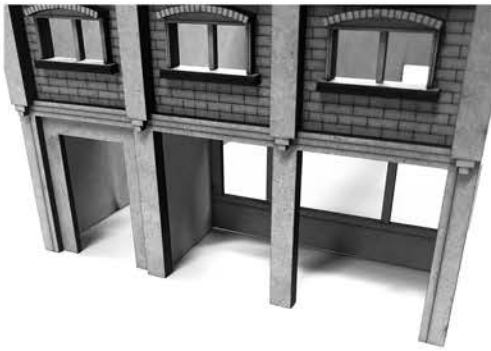
Glue the smaller wall and the window wall together in the shop as shown.

12



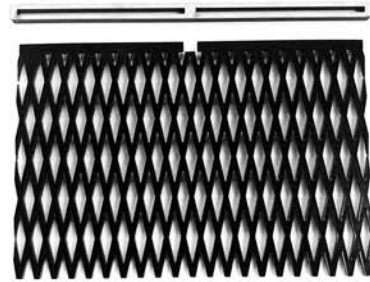
Glue the loft plate on top of the walls from step 11. The empty slot is for the removable grate.

13



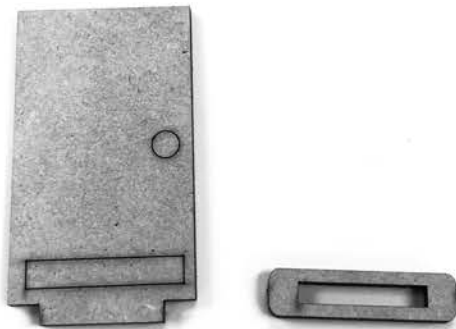
This should create a small blocked in space on the front like this.

14



Glue the acrylic grate into the MDF tab. Drops into open slot in the left. Do not glue into the left.

15



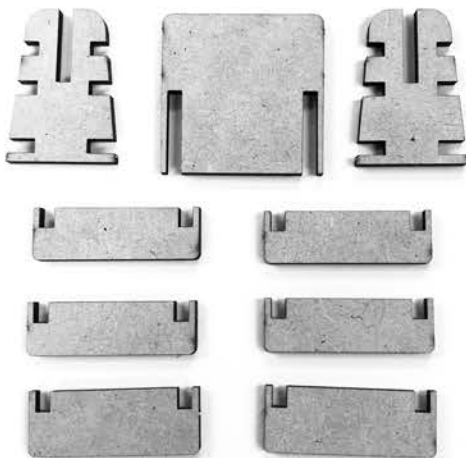
Gather parts for the doors.

16



Glue each door into its base.

17



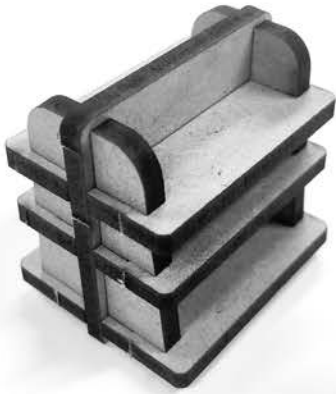
Gather parts for product shelves.

18



Glue the sides on slotted up into the middle plate.

19



Glue the shelves slotted onto the sides.

20



Gather parts for the counters.

21



Glue the sides, front and back, slotted together as shown.

22



Glue the countertop centered on the base as shown.

23



Glue the building onto the base and you're all done. Don't Glue the roof on if you want to use the playable interior.