

STEEL RIFT

SKYLINE: CITY SET



BEFORE YOU BEGIN:

PLEASE READ THROUGH THE INSTRUCTIONS AND INSPECT THE KIT BEFORE YOU GET STARTED.

Tools: You may need basic hobby tools such as a hobby knife, files, and sandpaper as well as glue to complete the assembly process.

Glue: We recommend using both superglue and PVA (white glue). Super glue is necessary for gluing any plastic, acrylic, or resin parts and sets very quickly. PVA gives you more working time if you need it for larger areas or for parts that need extra finesse to get lined up perfectly.

Cleaning Parts: The sprue points where parts were attached to the sheets can be sanded flush or carefully saved with a hobby knife. We do not recommend scaping as you would with plastic or resin models as it tends to make the MDF fray and get fuzzy. Part cleaning with a hobby knife is easiest if done before assembly, but can frequently be done after if you have files and sandpaper on hand. Where possible, we try to place sprue points in our designs to be in hidden places to avoid the need for cleaning on many parts.

Priming: We highly recommend priming with a FLAT enamel spray paint. Rustoleum and Krylon make these types of paint and are what we use in the studio.

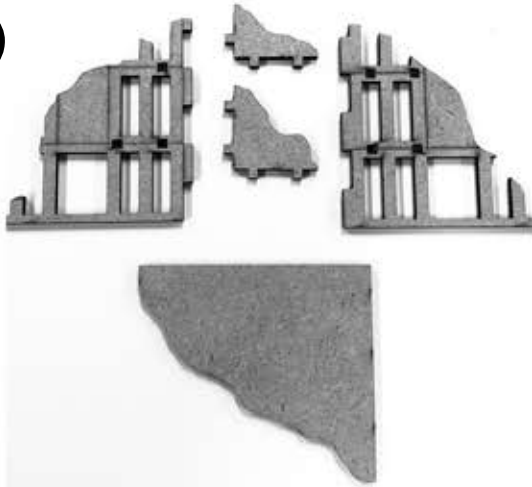
Painting: Paint with your normal hobby and spray paints to finish your project.

Thank you so much for your purchase and please reach out if you have any questions or run into any issues.

Email us at: support@deathraydesigns.com
Chat us on Facebook: [FB.com/DeathRayDesigns](https://www.facebook.com/DeathRayDesigns)



1



Gather these parts for a set of ruins. Each ruined corner will consist of 2 walls of similar height and 1 or more floors indicated by the rows of square slots. Gather ruined floors

2



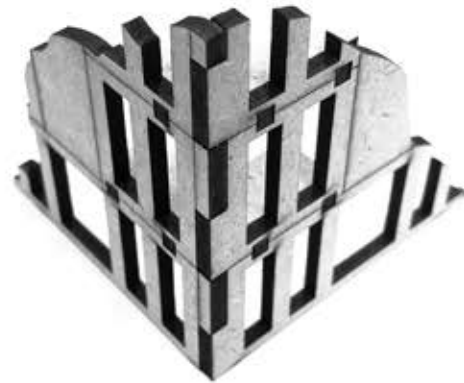
Glue all floors into one of the walls.

3



Glue other wall to the wall and floor combination from step 2.

4



Assembly should look like this from the outside.

5



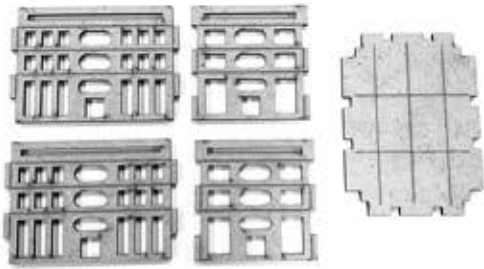
Glue assembly to base plate as shown. You may choose to leave a lip on the outside if you wish or glue all the way to the edge.

6



DO NOT GLUE to city block stands. The larger bases are intended to mark the area of the ruins. Corners can be shifted or removed during gameplay to accommodate model placement and movement.

Ã



Each of the 8 buildings consists of 4 walls and roof. Walls for a building will all be the same height and we recommend dry fitting before gluing if you are unsure. Some sizes are provided in two different window styles. These can be

Æ



Glue the roof into the slot(s) on one wall as shown.

Ä



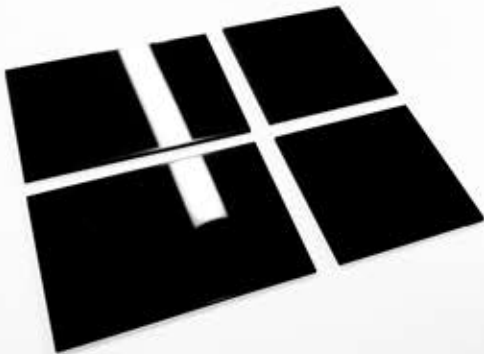
Glue the next two sides onto the roof and first wall as shown

Å



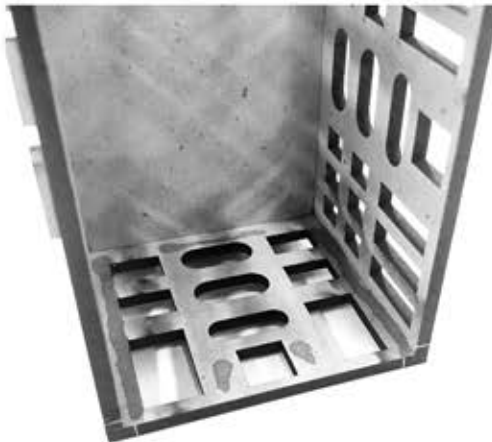
Glue the final wall in place completing the building. NOTE: We recommend painting the MDF portions before gluing in the acrylic windows for ease of use.

Ä



Gather the black acrylic windows for this building. The correct acrylic parts should just cover the windows and leave a slight gap around the edge when placed inside. The acrylic also has a protective layer on one side which can be removed to reveal a clean surface or left on if you want to use the already exposed side.

Å



NOTE: Please dry-fit acrylic before applying glue. To ensure the best placement. Place superglue around the perimeter as shown. Do not get glue too close to the edge of the window openings as it may squeeze out onto the window surface as you assemble. We also recommend a glue applicator with a long nozzle to make this process easier.



11



Glue in the acrylic one side at a time.

12



Your building is complete!